

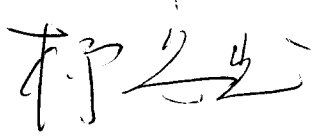
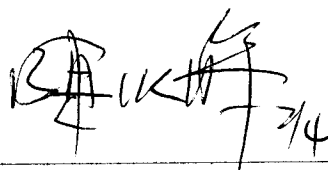
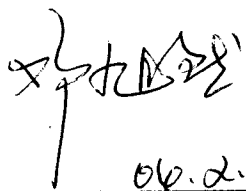
Address:  
Block 9, Shuiwei Ind Zone, Shuiwei New  
Village, Dalang, Longhua, Shenzhen,  
Guangdong, China 518109

Tel: (86)755-28121370/ 28121371/28109416/28109419  
Fax: (86)755-28109417  
E-mail: rd@horn.com.cn  
Website: www.horn.com.cn

**CUSTOMER: Digi-Key Corporation**

**APPROVAL SHEET**

PRODUCT NAME	PART NUMBR	DIMENSION	REMARK
Electret Condenser Microphone	<b>EM4020-48BC10&amp;33</b>	Ø4.0x2.0(mm)	(SMT)

APPROVED BY	CHECKED BY	ISSUED BY
 06.2.14	 7/4	 06.2.14

**APPROVED BY:**

**DATE:**

**PART NUMBER :EM4020-48BC10&33**

Address:  
Block 9, Shuiwei Ind Zone, Shuiwei New  
Village, Dalang, Longhua, Shenzhen,  
Guangdong, China 518109

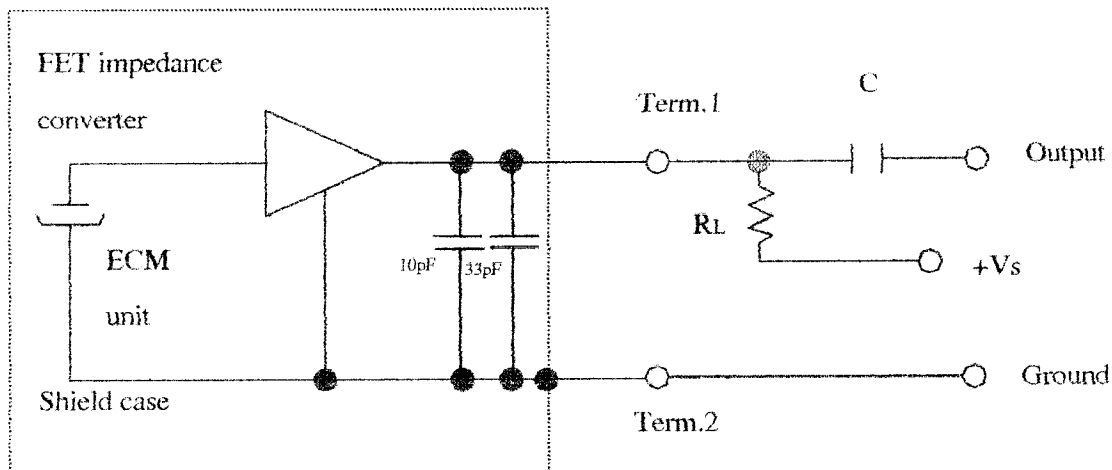
Tel: (86)755-28121370/ 28121371/28109416/28109419  
Fax: (86)755-28109417  
E-mail: rd@horn.com.cn  
Website: www.horn.com.cn

## SPECIFICATION

Item	Symbol	Test conditions	Min	Standard	Max	Unit
Sensitivity	S	f=1KHz. $P_{in}=1Pa$	-52	-48	-44	dB <small>0dB=1V/Pa</small>
Directivity	Omnidirectional					
Impedance	Zout				2.2	K $\Omega$
Input sound pressure level	S.P.L				100	dB
Operation voltage	Vs	-	1.0	2	10	V
Current consumption	I	f=1KHz. $P_{in}=1Pa$			500	uA
Sensitivity reduction	$\Delta S$	f=1KHz. $P_{in}=1Pa$ $V_s=2 \rightarrow 1.5V$			-3	dB
S/N ratio	S/N(A)	f=1KHz. $P_{in}=1Pa$ A=curve	58			dB

### Measurement Circuit (Test Condition $V_s=2V$ $R_L=2.2K\Omega$ )

$T_a=20^\circ C$  R.H=65%)



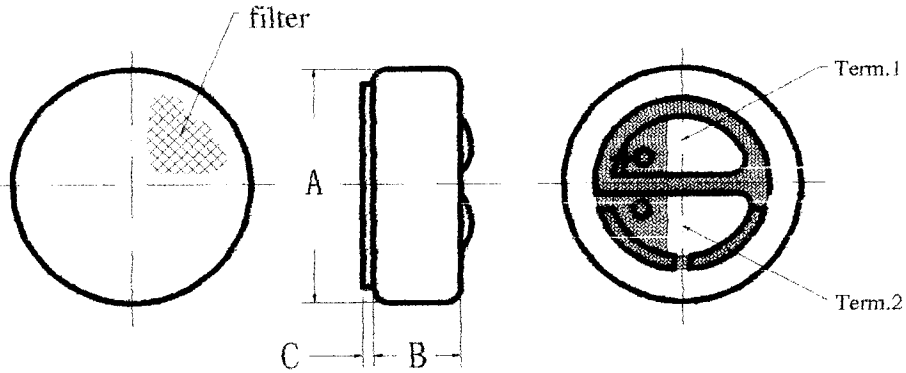
**PART NUMBER :EM4020-48BC10&33**

Address:  
Block 9, Shuiwei Ind Zone, Shuiwei New  
Village, Dalang, Longhua, Shenzhen,  
Guangdong, China 518109

Tel: (86)755-28121370/ 28121371/28109416/28109419  
Fax: (86)755-28109417  
E-mail: rd@horn.com.cn  
Website: www.horn.com.cn

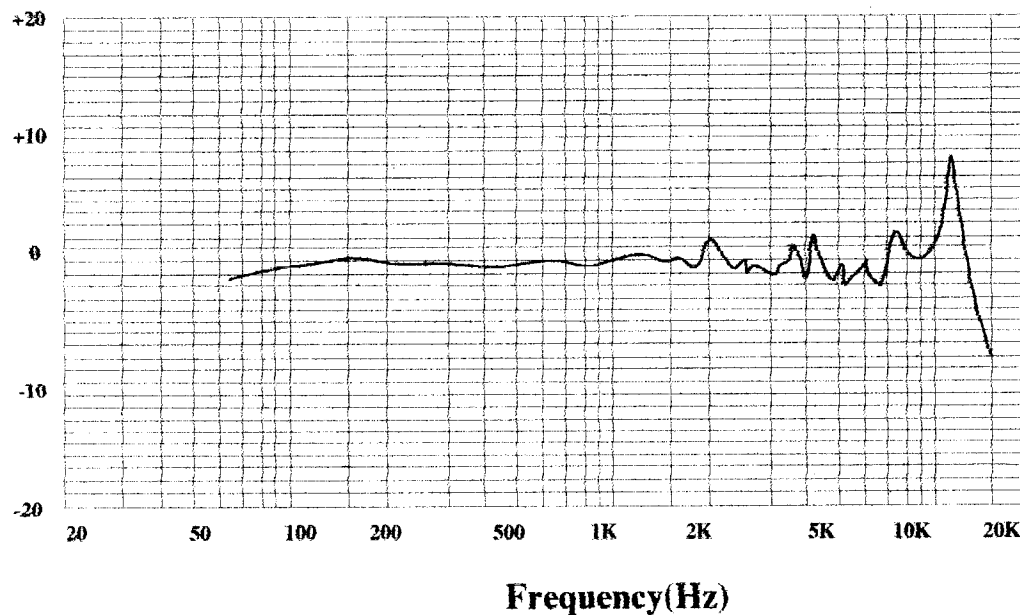
## Dimensional Drawing

unit: mm



PART	MIN	STANDARD	MAX	REMARK
A	Ø3.8	Ø4.0	Ø4.2	
B	1.8	2.0	2.0	
C	0.1	0.2	0.3	

## Typical Frequency Response Curve



**PART NUMBER :EM4020-48BC10&33**



Electret Condenser Microphone Units

深圳市豪恩电声科技有限公司

Shenzhen Horn Electroacoustic Technology Co.,Ltd

SPEC.SHEET NO: W04011402

Address:  
Block 9, Shuiwei Ind Zone, Shuiwei New  
Village, Dalang, Longhua, Shenzhen,  
Guangdong, China 518109

Tel: (86)755-28121370/ 28121371/28109416/28109419  
Fax: (86)755-28109417  
E-mail: rd@horn.com.cn  
Website: www.horn.com.cn

## Ambient condition

### (1) Operating condition

Ambient temperature:  $-10^{\circ}\text{C} \sim +45^{\circ}\text{C}$

Relative humidity:  $\leq 85\%$

### (2) Storage condition

Ambient temperature:  $-20^{\circ}\text{C} \sim +60^{\circ}\text{C}$

Relative humidity:  $45\% \sim 75\%$

## Reliability Test

### 1) Vibration Test

To be no interference in operation after vibration of full amplitude 2mm for 30 minutes at three axis, the sensitivity to be within  $\pm 3\text{dB}$  from initial sensitivity.

### 2) Drop test

To be no interference in operation after dropped to concrete floor each time from 1 meter height of three directions in state of packing, the sensitivity to be within  $\pm 3\text{dB}$  from initial sensitivity.

### 3) High Temperature Storage:

To be no interference in operation after high temperature test  $70^{\circ}\text{C} \pm 3^{\circ}\text{C}$  for 48 hours. The sensitivity to be within  $\pm 3\text{dB}$  from initial sensitivity.

### 4) Isotherm & Iso-humidity Storage

To be no interference in operation after storage test at temperature  $60^{\circ}\text{C} \pm 2^{\circ}\text{C}$  and relative humidity ( $93 \pm 3\%$ ) for 48 hours, the sensitivity to be within  $\pm 3\text{dB}$  from initial sensitivity, the test is performed at temperature  $20^{\circ}\text{C}$  after operation for 6 hours.

### 5) Low Temperature Storage

To be no interference in operation after test at temperature  $-20^{\circ}\text{C} \pm 3^{\circ}\text{C}$  for 48 hours, the sensitivity to be within  $\pm 3\text{dB}$  from initial sensitivity

### 6) Temperature Cycle Test

After exposure at  $55 \pm 2^{\circ}\text{C}$  for 1 hour, at  $20 \pm 2^{\circ}\text{C}$  for 1 hour, at  $-10 \pm 2^{\circ}\text{C}$  for 1 hour, at  $20 \pm 2^{\circ}\text{C}$  for 1 hour, with 5 cycles. Change of sensitivity within  $\pm 3\text{dB}$  from initial measuring should be done after 2 hours exposed to  $20^{\circ}\text{C} \pm 2^{\circ}\text{C}$ .

### 7) Collision Test

After collided with the acceleration  $100 \pm 10\text{m/s}$ , at the vertical & horizontal directions for  $1000 \pm 10$  times. at the state of packing. Change of sensitivity within  $\pm 3\text{dB}$  from initial.

**PART NUMBER :EM4020-48BC10&33**



Electret Condenser Microphone Units

深圳市豪恩电声科技有限公司  
SHENZHEN HORN ELECTROACOUSTIC TECHNOLOGY CO.,LTD

### TEST RESULT OF SAMPLES

NO.	1KHz (dB)	CURRENT (mA)	NOTES
1	-47.5	0.20	(1KHz、0dB=1V/Pa)
2	-47.4	0.20	
3	-48.0	0.22	
4	-49.6	0.17	
5	-48.9	0.23	
6	-48.1	0.25	
7	-47.5	0.20	
8	-49.0	0.20	
9	-49.0	0.17	
10	-47.8	0.15	
11	-46.0	0.16	
12	-45.5	0.18	
13	-46.1	0.18	
14	-46.0	0.15	
15	-46.2	0.20	

Customer: Digi-Key Corporation

Date: 2004.02.03

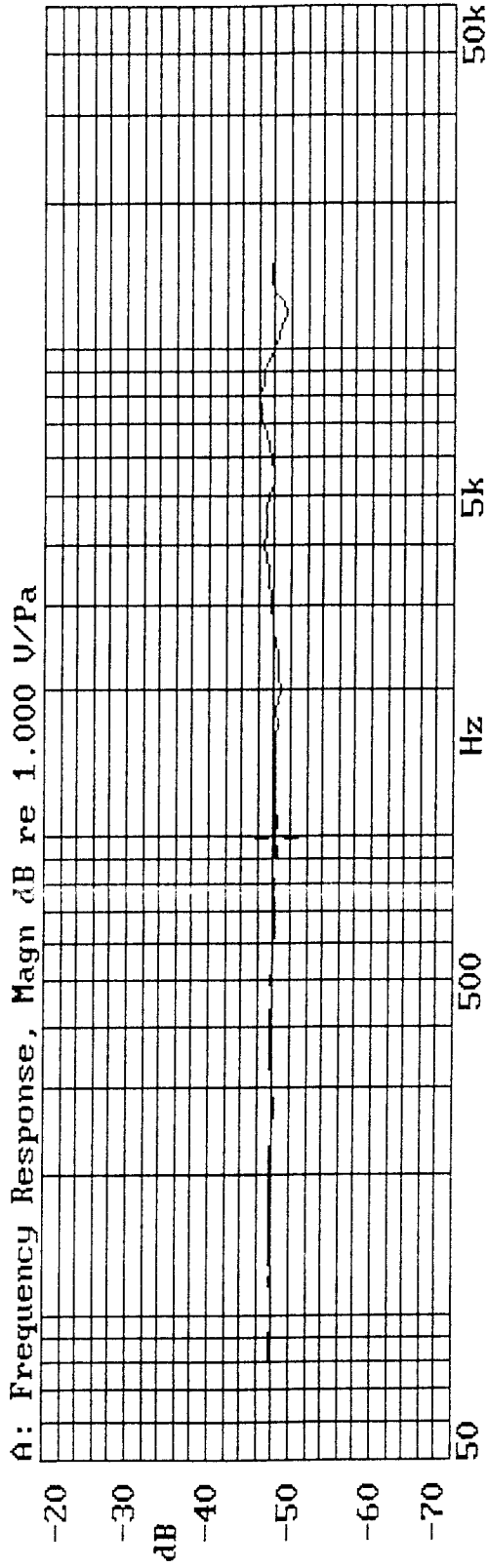
Part number: EM4020-48BC10&33

Sensitivity: -48±4dB

Test condition: 2.2K Ω 2V

Tester: G1

SHENZHEN HORN ELECTROACOUSTIC TECHNOLOGY CO., LTD.  
X:1.0000kHz \*Y:-48.10dB\* ZA:Live Curve SSR Fund.



MODEL : EM4020-48BC10&33  
CODE : 6#  
SENSITIVITY : -48.10dB (1KHz)  
TEST CONDITION : 2.2K $\Omega$  2V

03-FEB-2004 08:37:29

Mode: SSR





Electret Condenser Microphone Units

深圳市豪恩电声科技有限公司

SHENZHEN HORN ELECTROACOUSTIC TECHNOLOGY CO., LTD

TEL: 86-755-28121370/28121371/28109416/28109419

FAX: 86-755-28109417

Website: www.horn.com.cn

E-mail: rd@horn.com.cn

## Certificate of Confirmed Products

Date: Feb. 03. 2004

NO: W04011402

SUPPLIER	HORN	BUYER	Digi-Key Corporation	
TITLE	ECM	MODEL	EM4020-48BC10&33	
SIZE	φ 4.0 × 2.0mm	TEST CONDITION	2.2K Ω 2V	
QUANTITY		SAMPLE: 15PCS		
<b>SPECIFICATIONS</b>				
Sensitivity		-48 ± 4dB (0dB=1V/Pa. 1KHz )		
Directivity		Omnidirectional		
Impedance		Low impedance		
Standard operation voltage		2V		
Operation voltage		1.0-10V		
Current consumption		Max500uA		
Maximum input S.P.L		100dB		
S/N ratio		More than58dB		
Sensitive reduction		within-3dB at 1.5V		
The test result from customers		Signature: _____ . _____ . 2004		
Final confirmed	Pass	Refuse	Accepted basis on	
Remarks				

\*\*\*\*\* The form must be confirmed by return fax after your test as your best regards! \*\*\*\*\*